

World-leading Surface Preparation and Finishing Solutions

# Material Handling



# AIRBLAST EUROSPRAY, AN INTRODUCTION

---

Airblast Eurospray is one of the leading global voices in surface preparation and finishing. We design, manufacture, install and sell blast and spray equipment and facilities to some of the world's most important organisations. With roots stretching back to 1971, we're known for driving the market with innovative, technically excellent blast and paint solutions for a wide range of industries.

## WORLD-LEADING BLAST AND SPRAY EXCELLENCE

Our equipment is used in many demanding environments where product integrity is vital – so we only manufacture and sell facilities and equipment that we know are:

- Robust
- Well-designed
- Powerful
- Able to deliver optimum performance – safely and efficiently

## PROFESSIONAL RESULTS

We're proud to offer complete solutions for any blast and spray application with a full range of products and services to help you complete your work to a high professional standard. If you have a bespoke query or cannot locate a specific product our brochures, please contact our sales team who will be happy to help you.

## KNOWLEDGE TRANSFER

Performance is nothing without knowledge - especially with safety-critical processes like blasting. That's why we provide full operator training with industry experts as well as top-up training to keep experienced operators up-to-date with the latest blast and paint technology and developments. Contact our Training Specialists on 01778 560650 to find out more.

## SERVICE AND AFTERCARE

We want you to get the best from your equipment for years to come, so we offer:

- Product and facility servicing
- Service contracts with reduced parts and labour rates
- Equipment collection
- Site visits, inspection and investigation services
- Next day delivery on many products

## EQUIPMENT HIRE

Want to try before you buy? Many of our products are available for hire including blast machines, coating systems, water injection pumps, vacuum transfer units, suction and pressure cabinets, dust arrestors, hand-held closed circuit blast machines, closed circuit blasting and extractor fans. Contact our Hire Team for more information.

Finance packages available to help spread the cost of purchase. Get in touch today.

## AIRBLAST EUROSPRAY

Telephone: 01778 560650

Unit 26 King Street Industrial Estate  
Langtoft  
Peterborough  
PE6 9NF

sales@airblast.co.uk



# ABVAC PORTABLE VACUUM RECOVERY

The AbVac is an electric-powered suction unit mounted onto a rigid stand equipped with retractable legs. The unit is designed for the collection of anything from dust, up to 50mm debris into a bulk bag and is ideal for both mobile use and for fixed installations.

The retractable legs make it easy to move around and they allow the discharge outlet height to be adjusted to fit any size bulk bag. Its transportability means that the unit is mostly used as a free-standing suction unit with the connection of a 75mm or 100mm hose. However, it is also suitable for fixed installations connected to a fixed installed pipe system with multiple suction outlets.

## Optimal Solution

The AbVac requires no compressed air and offers huge airflow per HP. The unit's high suction capacity, together with its flexible discharge system, makes it very useful for a wide range of clean-up applications.

Due to its flexibility, the AbVac unit gets access to most areas where cleaning needs to be carried out, increasing material recovery rates usually limited by long runs of hose. The unit is easily maneuvered using a standard forklift truck or crane.

The AbVac unit is also much quicker and much safer than the back-breaking work of recovering material manually and can significantly reduce labor costs.

## Why AbVac?

- A robust unit for temporary mobile use.
- Automatic bulk bag filling of collected material.
- Filter system for dry and moist material.
- Automatic ATM filter cleaning system, without compressed air.
- Complete start/stop and controls system.
- Compact design and retractable legs offer maximum transportability.
- Can be placed in the exact location needed using a forklift.
- Easy height adjustment to suit bulk bags of various sizes.
- Improved health and safety and lower labor costs.
- Various options of safety filters, including HEPA filters.



# ABVAC PORTABLE VACUUM RECOVERY

## Operation

The vacuumed material is first separated in a specially designed fall chamber hopper with inlet wear protection. In this section all heavier and/or larger material will fall under gravity into the bottom of the hopper. From this section the air stream will continue to the main filter system where the remaining fine airborne dust will be separated. Collected material from both the above sections is commonly collected in the conical hopper.

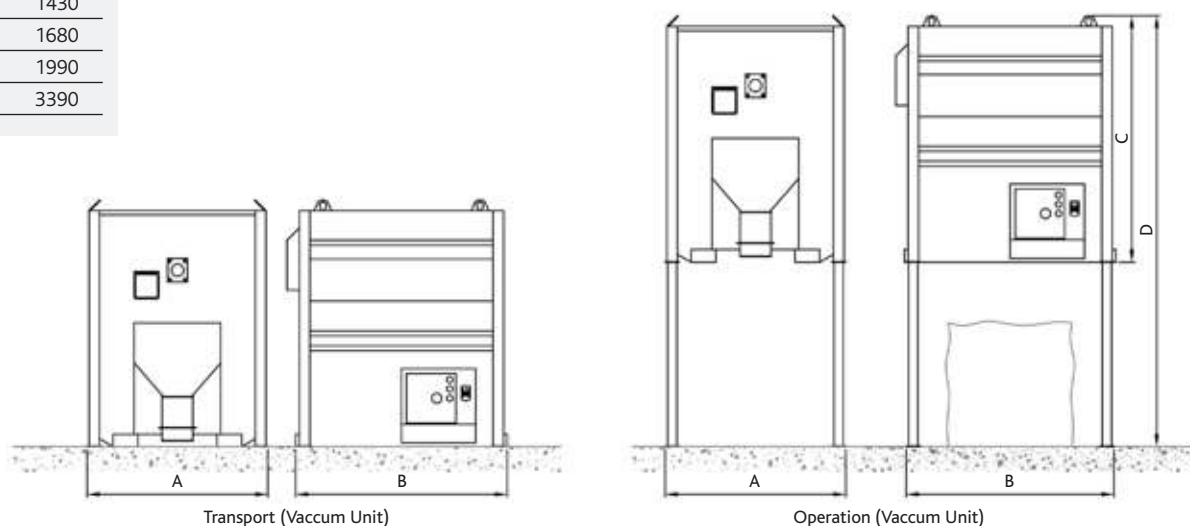
Discharge of material is made via the automatically operated balance valve at the bottom of the hopper. Discharge is executed parallel to each filter cleaning sequence, which normally takes place every 30 minutes. Filter cleaning is automatic and executed by a filter cleaning valve (ATM) located between the filter and the vacuum pump. When this valve is activated and opens, a counter flow of air is sucked in backwards through the filter bags, thus cleaning all filter bags simultaneously in a very short period. Thereafter the valve is closed again.

Cleaning intervals are normally every 30 minutes, and last for approximately 20 seconds, after which, full vacuum is restored. This valve also ensures that when the unit is started, it starts unloaded and vacuum load is introduced approximately 10 seconds after Star/Delta sequence is ended. All functions for the operation of the unit are controlled from the built-in electrical panel.

Available with a wide range of flexible hoses, tools and extensions.



Dimensions	mm
A	1430
B	1680
C	1990
D	3390



# AIRVAC PORTABLE VACUUM RECOVERY SYSTEM

The Airblast Eurospray AIRVAC is a robust, compact, highly efficient, pneumatic recovery unit.

## Features

The AIRVAC is capable of recovering spent abrasives or any other form of solid materials, ranging in size up to 20mm over a distance of up to 30m. The unit is fully air operated and only requires 250CFM of air at 85psi pressure (7m<sup>3</sup>/min. at 5.8bar). No other form of power is required to operate the unit. A simple modification converts the AIRVAC into a ventilation unit for ducting air from tanks etc.

## Accessories

A full range of accessories is available, such as:

- suction and material conveying hoses suitable for conveying all bulk materials and blasting media.
- reinforced and flexible hose for light cleaning.
- PVC vacuum hose for industrial cleaning.
- light rubber hose for the suction of abrasive materials and durable rubber hose for heavy duty suction and retrieval.

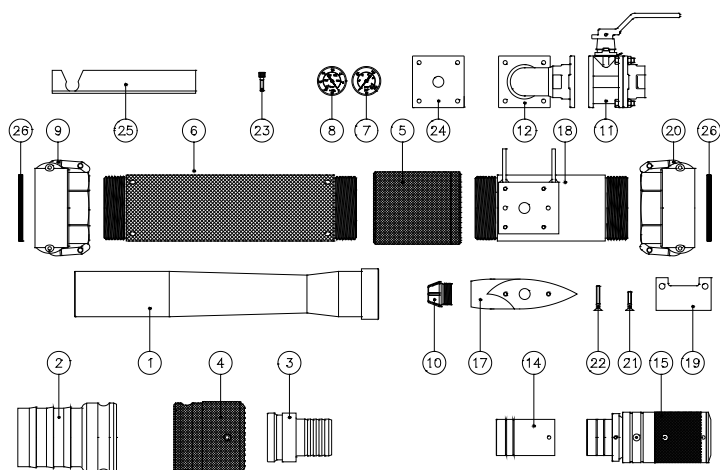
In addition a full range of couplings, connectors, suction hose manifolds complement the range.



Airvac Mark III assembly	
Part no.	AB3064000
Weight	27kg

Airvac optional accessories	
Part no.	Description
AB2183000	2½" (62mm) antistatic flexible plastic hose
AB2184000	4" (100mm) antistatic flexible plastic hose



Airvac – Parts list			
Item	Part no.	Description	Qty
01	AB3065000	AV-1 Venturi tube	1
02	AB3066000	AV-2 Discharge hose coupling	2
03	AB3067000	AV-3 Suction hose coupling insert	1
04	AB3068000	AV-4 Suction hose coupling	2
05	AB3069000	AV-5 Mixing chamber	1
06	AB3070000	AV-6 Venturi sheath	1
07	AB3071000	AV-7 Pressure gauge	1
08	AB3072000	AV-8 Vacuum gauge	1
09	AB3073000	AV-9 Discharge coupler	2
10	AB3074000	AV-10 Nozzle	2
11	AB3075000	AV-11 Air valve	1
12	AB3076000	AV-12 Manifold assembly	4
13	AB3077000	AV-13 Pump assembly (body with aerofoil fitted)	1
14	AB3078000	AV-14 Restrictor	1
15	AB3079000	AV-15 Gulper (adjustable)	1
16	AB3080000	Dust collector door handle	4
17	AB3081000	AV-17 Aerofoil	4
18	AB3082000	AV-18 Body	2
19	AB3083000	AV-19 Leg bracket	1
20	AB3084000	AV-20 Body coupler	1
21	AB3085000	AV-21 Location screw - short (2p/set)	1
22	AB3086000	AV-22 Location screw - long (2p/set)	1
23	AB3087000	AV-23 Manifold screw (4p/set)	1
24	AB3088000	AV-24 Manifold gasket	1
25	AB3089000	AV-25 Nozzle key	1
26	AB3090000	AV-26 Seal ring (camlock)	1



# RC-50-20 GRIT RECYCLING SYSTEM

The RC-50-20 is a mobile abrasive recycling machine which can be used inside or outside. Several types of reusable abrasive can be recycled by the RC-50-20, the rate of recycling depends upon the type of abrasive being processed. Used abrasive is manually fed into the intake hopper from where it is collected by the bucket elevator and transported up the funnel. At the top of the funnel the abrasive is poured onto the spreading plate which ensures an even, shallow and wide flow down into the cascade cleaner. Inside the cascade cleaner the larger particles are separated into a dust bag, and the smaller particles are extracted by a separate cartridge filter which features solenoid controlled automatic pulse cleaning. Depending upon which abrasive is being recycled, the unit can be adjusted to ensure that the abrasive flow and particle separation are fine-tuned to be as effective as possible. The cleaned abrasive is deposited into a hopper ready for reuse. The unit is manufactured in Europe from 3mm and 5mm steel to the highest quality standards. The motors and gearboxes are sealed and lubricated for life. The unit requires an electrical connection of 400volts – 50Hz as well as compressed air.



## Technical specifications

Dimensions (in standing position):

Height: 4.0mm

Width: 1.5mm

Depth: 1.8mm

Weight (empty): 650kg

## DELIVERY INCLUDES

### E 50 Elevator

Total height: 4000mm

Capacity: 50ltr per minute

Motor power: 0.75kW

Electrical power: 400Volt, 50/60Hz

Made from 2 and 3mm sheet steel, reinforced with steel profile. Equipped with a motor, gearbox, dust free rolling element, and an inspection hatch.

### K 350 Cascade Cleaner

Height: 650mm

Width: 350mm

Made from 3 and 5mm steel plate. The cleaner is mounted between the elevator and the stock silo.

### PF1-L Dustfilter (for Cascade Cleaner)

Cartridge Filter with automatic continuous solenoids which activate pulse cleaning.

Filter installation made from 3mm steel plate with sleeve profiles and reinforcements.

The filter installation consists of the following components:

Undercarriage with preseparator and dust silo with rubber plug valve,

Filter cabinet with integrated compressed air filter cartridge and cleaning system and a fan.

## Technical specifications

Exhaust capacity: 960m<sup>3</sup>/h

Static pressure: 1200Pa

Motor power: 0.75Kw

Motor voltage: 400Volt-50/60Hz

Filter cartridge: 1 pc.

Filter area: 325 x 15m<sup>2</sup>

Filter material: polyester nonwoven NA 806

Max. dust emission: <1.5mg/nm<sup>3</sup>

Dedusting : automatically by compressed air; max. 6bar

Valves: 1 pieces 1½ G

Pulse pressure: ± 5bar

Pulse cycle time: adjustable

Exhaust pulse: 1 cartridge equivalent

Noise level: 78dBA

Dust extraction: PVC bag

### S-200 Hopper

Abrasive silo 200ltr. Made from 3mm sheet steel, reinforced with steel profile and equipped with a grit valve and closing lid.

### Electric Panel

Complete with automatic switch controllers, mainswitch, failure lamp and control buttons.

# RC-50-150 GRIT RECYCLING SYSTEM

The RC-50-150 is an abrasive recycling system which can be used inside or outside. Several types of reusable abrasive can be recycled by the RC-50-150 into bigbags or blast vessels. The rate of recycling depends on the type of abrasive being processed.

## Operating principle:

Dust laden air enters through the inlet plenum of the collector, where heavy particles fall immediately into the hopper. As the air flows through the filter cartridges, dust is deposited on the outside of the filtering media. The filter cartridges are cleaned automatically and continually without interrupting the operation of the dust collector. An adjustable timer controls the cycle time. Solenoid valves introduce jets of high-pressure air into the cartridges in turn, through the Venturi opening above each cartridge. The resulting reverse airflow cleans the filter cartridges. Dust removed from the filter surface settles into the hopper. As each pair of filter cartridges is cleaned in succession, the remaining stay.

The used abrasive has to be put into the abrasive hopper, then it comes in a regulated flow to the elevator. From the elevator it comes in the rotary sieve, with holes Ø 4, 5 and 6mm at choice. If the abrasive is polluted with big parts like coating scale, woodchips, glass, etc. these contaminants are separated through the rotating movement of the sieve. The sieve is supplied complete with a dust exhaust connection. After the sieve the abrasive flow is through a cascade system.

The air wash action can be regulated to control the size of the reusable abrasive. Dust and non-usable (too fine) abrasive is automatically discharged and collected in big bags or extracted by the separate filter. The cleaned abrasive will fall into the abrasive silo and is ready to be stored into big bags or into blast vessels.

The system is supplied complete with: crane hooks, inspection covers and flexible dust-exhaust ducting to the big bags.



## Technical Specifications

Dimensions (in standing position):

Height: 4780mm  
Width: 2180mm  
Depth: 2180mm

Weight (empty): 3500kg

Total electrical power: 2kW 400Volt – 50/60Hz

Compressed air: 5bar

Capacity silo: 1.600ltr

Capacity elevator: 3000ltr/hour

> for garnet this is  $2.3 \times 3.000/1000 = 6.9\text{ton/hour}$

> for steel grit this is  $4.5 \times 3.000/1000 = 13.5\text{ton/hour}$

## DELIVERY INCLUDES

### Abrasive hopper with inlet sieve

Opening dimensions: Width approx: 700mm  
Depth approx: 500mm  
Height approx: 650mm

Made of 3mm. Steel plate complete with sieve and grit regulating system to prevent bucket conveyor overload.

### Bucket Elevator E-50

Gear motor: 0.75kW

Capacity: 50ltr/min

Closed dust-free bearing system. Special belt with Columbus buckets.

### Automatic Self Cleaning Rotary Screen TZ-80

(capacity 80ltr per minute)

Made of 2mm and 3mm steel plate, reinforced with profiles. Provided with motor reductor 0.37kW 400 Volt, dust-closed bearings and an inspection cover.

### Abrasive Cleaning

The rotary sieve must be used if the abrasive is polluted with big parts like coating-scale, wood chips, glass, etc. The contamination is separated through the rotating movement of the sieve. Further, the sieve comes complete with a dust exhaust connection.

# RC-50-150 GRIT RECYCLING/CLEANING SYSTEM

---

## Grit Cleaning System

Consisting of one heavy-duty cascade system with double air wash action of the abrasive, mounted directly onto the outlet of the elevator. Oversized materials are separated by screens in the bucket elevator hopper. Cascade cleaner is connecting with a suction ducting Ø 180mm to the filter unit.

The air wash action can be regulated to control the size of re-usable abrasive. The dust and non-useable abrasive (too fine) are discharged automatically and collected in big bags or extracted by the separate filter.

## Technical specifications

Exhaust capacity:	960m <sup>3</sup> /h
Total pressure:	1.200Pa
Motor power:	0.75Kw, 400/690 Volt, 3-Ph, 50Hz
Filter cartridge:	1pc. Ø 325 x 1000mm
Filter area:	15m <sup>2</sup>
Filter material:	polyester fabric
Filter percentage:	99.9%
Max. dust emission:	<1.5mg/nm <sup>3</sup>
Cleaning:	continuous by compr. air max. 5bar
Solenoid valves:	1 pcs (1" G)
Cleaning pressure:	4 bar
Cycle time:	adjustable
Sequence:	1 cartridge simultaneous
Dust collecting bags:	PVC bag

## Abrasive Storage Silo 1500ltr

Silo constructed of 3mm steel plate and profiles complete with abrasive stop and connection for 2 big bags or 2 blast vessels.

## Electric Panel

Complete with automatic switch controllers, mainswitch, failure lamp and control buttons.

## Steel Frame Construction

All components are mounted within a sturdy steel frame complete with crane hooks, so in this case the unit is easy to transport and requires little down-time to set up.

All components are mounted within a sturdy steel frame, so the unit is easy to transport and requires little downtime to set up.



# RC-80-160 GRIT RECYCLING SYSTEM

The RC-80-160 is an abrasive recycling system that can be used inside or outside. Several types of reusable abrasive can be recycled by the RC-80-160 into big bags or blast vessels. The rate of recycling depends on the type of abrasive being processed.

## Operating principle:

Dust laden air enters through the inlet plenum of the collector, where heavy particles fall immediately into the hopper. As the air flows through the filter cartridges, dust is deposited on the outside of the filtering media. The filter cartridges are cleaned automatically and continually without interrupting the operation of the dust collector. An adjustable timer controls the cycle time. Solenoid valves introduce jets of high-pressure air into the cartridges in turn, through the Venturi opening above each cartridge. The resulting reverse airflow cleans the filter cartridges. Dust removed from the filter surface settles into the hopper. As each pair of filter cartridges is cleaned in succession, the remaining stays.

The used abrasive has to be put into the abrasive hopper, then it comes in a regulated flow to the elevator. From the elevator it comes in the rotary sieve, with holes Ø 4, 5 and 6mm at choice, if the abrasive is polluted with big parts like coating scale, woodchips, glass, etc. these contaminants are separated through the rotating movement of the sieve. The sieve is supplied complete with a dust exhaust connection. After the sieve the abrasive flow is through a cascade system.

The air wash action can be regulated to control the size of the reusable abrasive. Dust and non-usable (too fine) abrasive are automatically discharged and collected in big bags or extracted by the separate filter. The cleaned abrasive will fall into the abrasive silo and is ready to be stored into big bags or into blast vessels.

The system is supplied complete with: crane hooks, inspection covers and flexible dust-exhaust ducting to the big bags.



## TECHNICAL SPECIFICATIONS

Dimensions (in standing position):

Height:	4780mm
Width:	2180mm
Depth:	2180mm
Weight (empty):	3000kg
Total electrical power:	2.75kW 400 Volt – 50/60Hz
Compressed air:	5bar
Capacity silo:	1600ltr
Capacity elevator:	4800ltr
	> for garnet this is 2.3 x 4800/1,000 = 11ton/hour
	> for steel grit this is 4.5 x 4800/1,000 = 21ton/hour

## DELIVERY INCLUDES

### Abrasive hopper with inlet sieve

Opening dimensions: Width approx: 700mm  
 Depth approx: 500mm  
 Height approx: 650mm

Made of 3mm steel plate complete with sieve and grit regulating system to prevent bucket conveyor overload.

### Bucket Elevator E-80

Gear motor: 1.5kW  
 Capacity: 80ltr/min

Closed dust-free bearing system. Special belt with Columbus buckets.

### Automatic Self Cleaning Rotary Screen TZ-80 (capacity 80ltr per minute)

Made of 2mm and 3mm steel plate, reinforced with profiles. Provided with motor reductor 0.37kW 400 Volt, dust-closed bearings and an inspection cover.

### Abrasive Cleaning

The rotary sieve must be used if the abrasive is polluted with big parts like coating-scale, wood chips, glass, etc. The contamination is separated through the rotating movement of the sieve. Further, the sieve comes complete with a dust exhaust connection.

# RCV-80-160 GRIT RECYCLING SYSTEM

---

## Grit Cleaning System

Consisting of one heavy-duty cascade system with double air wash action of the abrasive, mounted directly onto the outlet of the elevator. Oversized materials are separated by screens in the bucket elevator hopper. Cascade cleaner is connecting with a suction ducting Ø 180mm to the filter unit.

The air wash action can be regulated to control the size of re-usable abrasive. The dust and non-useable abrasive (too fine) are discharged automatically and collected in big bags or extracted by the separate filter.

## Technical Specifications

Exhaust capacity:	960m <sup>3</sup> /h
Total pressure:	1.200Pa
Motor power:	0.75Kw, 400 Volt, 3-Ph, 50Hz
Filter cartridge:	1pc. Ø 325 x 1000mm
Filter area:	15m <sup>2</sup>
Filter material:	polyester fabric
Filter percentage:	99.9%
Max. dust emission:	< 1.5 mg/nm <sup>3</sup>
Cleaning:	continuous by compr. air max. 5bar
Solenoid valves:	1 pcs (1" G)
Cleaning pressure:	4bar
Cycle time:	adjustable
Sequence:	1 cartridge simultaneous
Dust collecting bags:	PVC bag

## Abrasive Storage Silo 1500ltr

Silo constructed of 3mm steel plate and profiles complete with abrasive stop and connection for 2 big bags or 2 blast vessels.

## Electric Panel

Complete with automatic switch controllers, mainswitch, failure lamp and control buttons.

## Steel Frame Construction

All components are mounted within a sturdy steel frame complete with crane hooks, so in this case the unit is easy to transport and requires little down-time to set up.

All components are mounted within a sturdy steel frame, so the unit is easy to transport and requires little downtime to set up.

# AB710 HEAVY DUTY RECOVERY AND CLEANING SYSTEM

This robust and extremely powerful system is designed for the recovery of blasting shot. Equipped with automatic pneumatic pinch valve and automatic self-cleaning NCF filter. Most of the dust is separated from the blasting shot or from the collected granulates. The dust is channelled into its own container, while the blasting shot or granulated material is fed back into the blasting pot, onto conveyors or into other containers.

## Features

- Extremely high vacuum for suction of heavy material over long horizontal and vertical distances.
- Dust separation from collected granules and grit.
- Automatic filter cleaning and silo discharge.

## Applications:

- Cleaning of floors
- Cleaning of machines
- Cleaning of blasted area
- Removing of abrasive



Technical data	Metrical	Imperial
Max. vacuum	7800mm WC	307 in WC
Max. air flow	318Nm <sup>3</sup> /hr	187cfm
Compressed air consumption	5.3Nm <sup>3</sup> /min	187cfm
Compressed air pressure	700kPa	7bar
Noise level	75dB(A)	-
Main filter:	43162001	-
Main filter area:	3.15m <sup>2</sup>	33.9ft <sup>2</sup>
Main filter approval category:	H12	-
Main filter type:	NCF	-
Main filter material:	PET w/membrane	-
Main filter cleaning method:	Pressurized air	-
Approval category EN1822-1: 1998		
Control filter:	-	-
Control filter area:	-	-
Control filter approval category:	-	-
Control filter type:	-	-
Control filter material:	-	-
Control filter cleaning method:	-	-
Container gross volume:	67 + 220ltr	17.7 + 58.1gallon
Container practical volume:	67 + 220ltr	17.7 + 58.1gallon
Standard suction inlet diameter:	63mm	2.5 inches
Standard suction hose diameter:	63mm	2.5 inches
Standard suction hose length:	10m	32.8 feet
Standard suction hose quality:	PUR	-
Simultaneous operators:	-	-
Length x Width x Height:	1875 x 1000 x 3025mm	74 x 39 x 119 inches
Note: The vacuum cleaner is fully equipped and ready for immediate use.		



# AB2030 – VACUUM CLEANER

This fully pneumatic or electrically driven vacuum suction machine is characterised by its solid build and finish, simplicity and high operating reliability. The AB2030 can be used for cleaning of (heavy) soiled floors, workplaces and machines both inside and outside. In addition it can also be used for vacuuming of abrasive, granulates and coarse dirt parts.

The aspirated material can be discarded, by the machine into a large waste bin or bag. The machine is supplied with a 5m very wear-resistant polyurethane lined, suction hose and various different suction mouths.



#### Applications:

- Cleaning of floors
- Cleaning of machines
- Cleaning of blasted area
- Removing of abrasive

#### Technical specifications AB2030 EL

Technical data	Pneumatic	Electric
Dust bin capacity (ltr)	15	25
Max. hose length (m)	5	5
Empty weight (kg)	34	34
Power (W)		2000
Voltage		240VAC / 50Hz / 1Ph
Max. air consumption (ltr/min)	2300	1000
Max. static pressure	350	200
Noise level (dB(A))	80	80
Dimensions in cm. (L x W x H)	142 x 43 x 48	124 x 43 x 48

#### Vacuum cleaning machine AB2030

Delivery includes:

- The complete blasting unit
- Hose set
- 3 standard suction tools
- Operator's manual
- Export packaging

#### Machine options and accessories:

- Remote control system

## AB2050 – VACUUM CLEANER

The AB2050 is a compressed air-driven or electrically-driven vacuum suction machine and is characterised by a solid construction, robustness and finish. Unlike the AB2030 series vacuum suction machines, it can be drained through a dust-drain valve into a plastic bag.

The AB2050 PN can be used for cleaning (heavy) soiled floors, workplaces and machines. In addition, it can also be used for vacuuming of abrasive, granulates and coarse dirt parts.

The machine comes standard with a 5m polyurethane lined, very wear-resistant suction hose and various nozzles. For the saving of compressed air, it can also be supplied with an on/off switch in the power nozzle.

The aspirated material can be discarded, by the machine into a large waste bin or bag.



### Applications:

- Cleaning of floors
- Cleaning of machines
- Cleaning of blasted area
- Removing of abrasive

### Technical specifications AB2050 PN/EP

	Pneumatic	Electric
Dust bin capacity (ltr)	35	35
Max. hose length (m)	5	5
Empty weight (kg)	68	70
Power (W)		3000
Voltage		240 VAC / 50Hz / 1Ph
Max. working pressure (bar)	7	7
Max. air consumption (ltr/min.)	2300	1600
Max. static pressure (mbar)	360	200
Noise level (dB(A))	80	80
Dimensions in cm (L x W x H)	148 x 52 x 55	140 x 52 x 52

### Vacuum cleaning machine AB2030

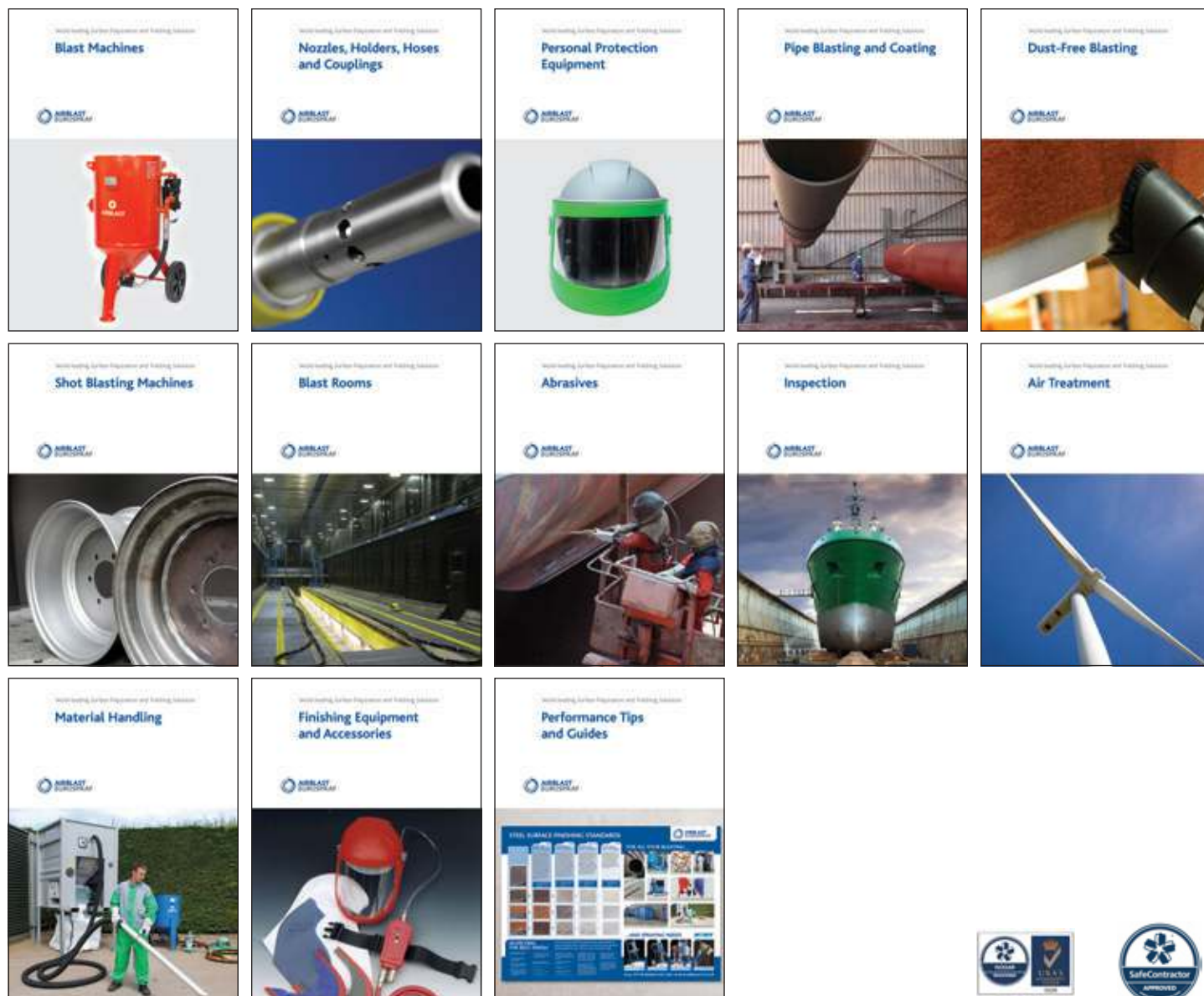
Delivery includes:

- The complete blasting unit
- Hose set
- 3 standard suction tools
- Operator's manual
- Export packaging

### Machine options and accessories:

- Remote control system

# WORLD LEADING SURFACE PREPARATION & FINISHING SOLUTIONS



## Airblast Eurospray account

To open an account, simply get in touch with us today.

All products sold are subject to our standard Terms and Conditions, which are available on request. E&OE. Price does not include delivery.

## Products and services

- Blast rooms
- Abrasive blast cabinets
- Portable blast systems
- Blast accessories
- Lighting systems
- Compressors
- Dust recovery equipment
- Paint spray booths
- Coating systems
- Coating accessories
- Personal Protective Equipment
- Media
- Testing equipment
- Design and build
- Servicing
- Reconditioning
- Pressure testing
- Training
- Sample processing
- Equipment hire

## Contact us

For further information on how our products and services could benefit your company, please contact us by any of the means below.

Airblast Ltd  
Unit 26, King Street Industrial Est  
Langtoft, Peterborough  
Cambridgeshire PE6 9NF

Tel 01778 560650  
Fax 01778 560724  
sales@airblast.co.uk  
www.airblast.co.uk